



2023 BUYER'S GUIDE





NO LIMIT

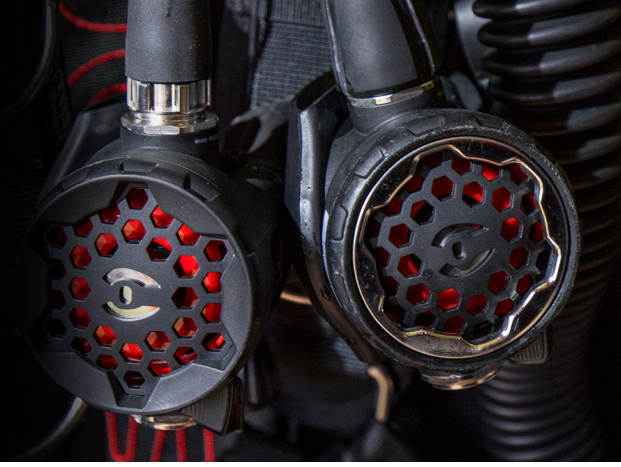
Hollis engineers superior technical diving equipment. We are intensely focused on providing diving solutions to fulfill our customer's needs: owning the best technical diving products for their complex diving experiences. This philosophy comes from our founder and industry pioneer Bob Hollis—a man with no limits when it comes to technical diving. In the 1950s with diving still in its infancy, twenty-something-year-old Hollis pushed boundaries by building his own equipment to fuel his passion for the underwater. The ensuing decades saw Hollis innovate and disrupt—pioneering dives to the Andrea Doria—and develop reliable and dependable products that not only launched the technical diving industry but pushed the limits of tech diving into the adventure-seeking, curiosity-driven passion it's revered as today.

Our best-in-class authority and experience leads every stage of product development, serving both the tech diver and educating the rec diver towards a brand-new category of diving. From backplates, wings, harnesses and lighting systems, to sidemount and rebreathers, we concept, engineer, test and test again to ensure we remain the leading global provider of all technical diving equipment.

Divers around the world proudly bear the Hollis mark, committing their trust to the brand that challenges their limits.

WHILE SUPPLIES LAST

The following items are not part of the 2023 product assortment and are only available while supplies last. Please refer to your 2022 buyer's guide for more product details and imagery. List is between pages 3-5.



PART NUMBER	DESCRIPTION
204.6175.40	BATTERY KIT, DG01, DG02, DG03, TX1
204.2312.07	BOOT ONLY (BK), METAL PG
208.1311	SMS75 SINGLE WING - ONLY
208.1320	SMS100 BUNGEE KIT
240.1650	SMS DECO RIGGING KIT
220.8126	DOUBLE OFFSET D-RING - SMS
208.1060.013	INFLATOR SYSTEM W/ ELBOW 13" /33CM
208.1060.019	INFLATOR SYSTEM W/ ELBOW 19" /48CM
220.9007	HTS 2 BUTTPLEASE (BACKPLATE COMPATIBLE)
208.1025	CROTCH STRAP, 1-0-INCH WEBBING W/ SCOOTER RING
208.1027	CROTCH STRAP, 1-5-INCH WEBBING W/ SCOOTER RING
208.1029	UTILITY POCKET
208.1039	SMS100 RAIL KIT (1 SET)
208.1264	BACK PLATE BACK PAD W/BOOKSCREWS
277.0025	P-VALVE, BALANCED
277.0026	ADHESIVE, DRY SUIT, PINT
277.0056.002	AUG 450 (TOP) - MENS SM
277.0056.003	AUG 450 (TOP) - MENS MD
277.0056.005	AUG 450 (TOP) - MENS LG
277.0056.006	AUG 450 (TOP) - MENS XL
277.0056.007	AUG 450 (TOP) - MENS XXL
277.0056.008	AUG 450 (TOP) MENS XXXL
277.0056.011	AUG 450 (TOP) - LADIES 4/3XS
277.0056.012	AUG 450 (TOP) - LADIES 6/2XS
277.0056.013	AUG 450 (TOP) - LADIES 8/XS
277.0056.014	AUG 450 (TOP) - LADIES 10/SM
277.0056.015	AUG 450 (TOP) - LADIES 12/MD
277.0056.016	AUG 450 (TOP) - LADIES 14/ML
277.0056.017	AUG 450 (TOP) - LADIES 16/LG
277.0056.018	AUG 450 (TOP) - LADIES 18/2XL
277.0057.002	AUG 450 (BOTTOM) - MENS SM
277.0057.003	AUG 450 (BOTTOM) - MENS MD
277.0057.005	AUG 450 (BOTTOM) - MENS LG
277.0057.006	AUG 450 (BOTTOM) - MENS XL
277.0057.007	AUG 450 (BOTTOM) - MENS XXL
277.0057.008	AUG 450 (BOTTOM) - MENS XXL
277.0057.011	AUG 450 (BOTTOM) - LADIES 4/3XS

WHILE SUPPLIES LAST

The following items are not part of the 2023 product assortment and are only available while supplies last. Please refer to your 2022 buyer's guide for more product details and imagery. List is between pages 3-5.



PART NUMBER	DESCRIPTION
277.0057.012	AUG 450 (BOTTOM) - LADIES 6/2XS
277.0057.013	AUG 450 (BOTTOM) - LADIES 8/XS
277.0057.014	AUG 450 (BOTTOM) - LADIES 10/SM
277.0057.015	AUG 450 (BOTTOM) - LADIES 12/MD
277.0057.016	AUG 450 (BOTTOM) - LADIES 14/ML
277.0057.017	AUG 450 (BOTTOM) - LADIES 16/LG
277.0057.018	AUG 450 (BOTTOM) - LADIES 18/2XL
217.6506.03	BAG, DRY, PVC-TARPAULIN - 9"WX21-25"H - BLACK
205.5015.LT	OPTICAL LENS M3 -1.5 - LT
205.5015.RT	OPTICAL LENS M3 -1.5 - RT
205.5020.LT	OPTICAL LENS M3 -2.0 - LT
205.5020.RT	OPTICAL LENS M3 -2.0 - RT
205.5025.LT	OPTICAL LENS M3 -2.5 - LT
205.5025.RT	OPTICAL LENS M3 -2.5 - RT
205.5030.LT	OPTICAL LENS M3 -3.0 - LT
205.5030.RT	OPTICAL LENS M3 -3.0 - RT
205.5035.LT	OPTICAL LENS M3 -3.5 - LT
205.5035.RT	OPTICAL LENS M3 -3.5 - RT
205.5040.LT	OPTICAL LENS M3 -4.0 - LT
205.5040.RT	OPTICAL LENS M3 -4.0 - RT
205.5045.LT	OPTICAL LENS M3 -4.5 - LT
205.5045.RT	OPTICAL LENS M3 -4.5 - RT
205.5050.LT	OPTICAL LENS M3 -5.0 - LT
205.5050.RT	OPTICAL LENS M3 -5.0 - RT
205.5055.LT	OPTICAL LENS M3 -5.5 - LT
205.5055.RT	OPTICAL LENS M3 -5.5 - RT
205.5060.LT	OPTICAL LENS M3 -6-0 - LT
205.5060.RT	OPTICAL LENS M3 -6-0 - RT
205.5065.LT	OPTICAL LENS M3 -6-5 - LT
205.5065.RT	OPTICAL LENS M3 -6-5 - RT
205.5070.LT	OPTICAL LENS M3 -7-0 - LT
205.5070.RT	OPTICAL LENS M3 -7-0 - RT
205.5075.LT	OPTICAL LENS M3 -7-5 - LT
205.5075.RT	OPTICAL LENS M3 -7-5 - RT
205.5080.LT	OPTICAL LENS M3 -8-0 - LT
205.5080.RT	OPTICAL LENS M3 -8-0 - RT
206.1200	LED1200 CANISTER SYSTEM, STANDARD

WHILE SUPPLIES LAST

The following items are not part of the 2023 product assortment and are only available while supplies last. Please refer to your 2022 buyer's guide for more product details and imagery. List is between pages 3-5.



PART NUMBER	DESCRIPTION
206.1201	LED1200 CANISTER SYSTEM, SIDEMOUNT
206.1201.1	LED1200 2AMP LITHIUM CHARGER ASSEMBLY
206.1204	ALUMINUM GOODMAN HANDLE, LED1200
203.8030.SS	SS FINGER SPOOL 30'
203.8100.SS	SS FINGER SPOOL 100'
203.8150.SS	SS FINGER SPOOL 150'
210.8037	1 IN PLASTIC SLIDER
210.8022	1 IN D-RING STAINLESS
210.8020	5 CM ROUND RING STAINLESS
210.8004.030	SWIVEL EYE BUTTERFLY SNAP 3 IN
210.8003.045	4.5 IN DOUBLE ENDED SNAP SST
210.8040	NARROW PLATE / WELDED D-RING 90 DEGREE WAIST
210.8041	WIDE PLATE / WELDED D-RING 45 DEGREE CHEST
210.8042	2.54 CM D-RING TO HOSE CLAMP
220.8124	SMALL LINE ARROW 1.5"X2.5" (4PK)
220.8122.2	UNDERWATER NOTEBOOK - COVER ONLY

PACKAGE PROMOS 7

REGULATORS 9

SECOND STAGE COMPARISON CHART	10
FIRST STAGE COMPARISON CHART	10
200LX	11
150LX	12
500SE	13
DCX	13
DC7	14
HO2	14
MOD-1	15
REGULATOR ACCESSORIES	16

BUOYANCY 17

BUOYANCY COMPARISON CHART	18
HD-200	19
L.T.S.	19
KATANA 2	20
SMS 75	21
ST SYSTEMS	22
ST ELITE SYSTEMS	23
DT SYSTEMS	24
SYSTEMS OVERVIEW	25
ST WINGS	26
DT WINGS	27
HTS 2	28
SOLO	28
ELITE 2	28
STAINLESS AND ALUMINUM BACKPLATE 2.0	29
LX2 12LB WEIGHT SYSTEM	30
BACKPLATE BACKPAD 2.0	30
BUOYANCY ACCESSORIES	31

INSTRUMENTS 32

LOW-PROFILE BRASS SPG	33
BRASS SPG	33
LARGE PONY BOTTLE GAUGE	34
INSTRUMENT ACCESSORIES	34

EXPOSURE 35

EXPOSURE COMPARISON CHART	36
DX-300X	37
NEOTEK 8/7/6	38
NEOTEK 4/3	39

BAGS 40

DUFFEL BAG	41
MESH DUFFEL BAG	41
REGULATOR BAG	41

MASKS AND FINS 42

MASKS COMPARISON CHART	43
FIN COMPARISON CHART	43
M1	44
M3	44
M4	45
F1	45
F1 LT	45
F2	46
FIN ACCESSORIES	46

LIGHTS 47

LIGHTS COMPARISON CHART	48
LED 6	49
LED 3	49
LED MINI 3	50
LIGHT ACCESSORIES	50

SEEKER REELS 51

FINGER SPOOLS 51

LIFT BAGS AND SMB'S 52

LIFT BAGS	52
SIGNAL MARKER BUOYS	52

GENERAL ACCESSORIES 53

EXPOSURE SIZING CHARTS 54

2023 PACKAGE PROMOS

MASK AND FIN PACKAGE PROGRAM

Purchase twelve sets and receive the package pricing:

Part No.	Item
MASKS (PURCHASE 12)	
205.4500.07	M1
205.4700.07/10	M3 Black or White
205.4800.07	M4
FINS (PURCHASE 12)	
214.2100.00X	F1 LT
214.2200.00X	F1
214.2300.00X	F2



PROMO CODE: MFPPROMO



SMS PACKAGE

Pick any of the SMS Systems or upgrade your customer to either the 500SE or 200LX + DCX Kit and pay the price difference.

Part No.	Item	Qty
240.3573	DCX 1st Stage DIN	2
240.2000.LX	200LX 2nd Stage	2
204.2382.032.M	Hose, LP 32" Miflex	1
204.2382.084	Hose, LP 84"	1
204.2310	Press Gauge Metal No Boot	2
204.2380.006	Hose, HP 6"	2
208.13XX.00X	SMS 75 or SMS KATANA 2	1
240.4152	Regulator Necklace	1

PROMO CODE: SMSPROMO

Upgrade to Katana 2, Katana 2 Dual or SMS100 Dual for an additional fee. See price list for details.



SMS REGULATOR PACKAGE*

Customize your SMS package. Pick any of the SMS Systems or swap a 200LX for the 500SE.

Part No.	Item	Qty
240.3573	DCX 1st Stage DIN	2
240.2000.LX	200LX 2nd Stage*	2
204.2382.032.M	Hose, LP 32" Miflex	1
204.2382.084	Hose, LP 84"	1
204.2310	Press Gauge Metal No Boot	2
204.2380.006	Hose, HP 6"	2
240.4152	Regulator Necklace	1

PROMO CODE: SMSREGPROMO

*or 500SE 2nd Stage at same price



*No product substitutions. No additional discounts. Two package order/ shipment minimum. Description and image must be included with any advertisement. Available in the USA and Caribbean only. May not be combined with any other offer.

REGULATORS

SECOND STAGE REGULATORS



200LX
CE



150LX
CE



500SE
CE



150LX OCTO
CE

FIRST STAGE REGULATORS



DCX
CE



DC7
CE



HO2
CE

MOD1



MOD-1
CE



SCUBA POD
CE

COMPARISON CHARTS

SECOND STAGES	200LX	500SE	150LX	150LX OCTO
Valve Type	Demand	Servo	Demand	Demand
Pneumatically Balanced System	✓	✓	✓	✓
Material	PVD-plated brass	Chrome-plated brass	Chrome-plated brass	Chrome-plated brass
Patented Dynamic Adjustment Automatically Maintains Inhalation Effort throughout the Dive	✓		✓	✓
Dive / Pre-Dive Switch	✓		✓	✓
Integrated Purge Button	✓	✓	✓	✓
Patented Orthodontic Mouthpiece with High-Density Bite Tabs	✓	✓	✓	✓
Nitrox Compatible	Standard to 40%	Standard to 40%	Standard to 40% Up to 99.9% on H02	Standard to 40%
Weight without hose	9.6 oz (273 g)	8.6 oz (240 g)	8.96 oz (254 g)	8.96 oz (254 g)
1st Stage Configuration	DCX	DC7	DC7, H02	N/A
Minimum Cracking Effort	.8 CIW	.8 CIW	1.0 CIW	1.5 CIW
Factory Set Inhalation Effort	1.0 – 1.2 CIW	1.0 – 1.2 CIW	1.0 – 1.2 CIW	1.5 – 2.0 CIW
Work of Breathing - 198 ft (60 m)	.76 Joules	1.1 Joules	.90 Joules	.90 Joules

FIRST STAGES	DCX	DC7	H02
Type	Over-Balanced Diaphragm	Over-Balanced Diaphragm	Unbalanced Piston
Primary Material	DLC-plated Marine Brass	Forged Triple Chrome Plated Marine Brass, Stainless Valve Orifice	Marine Brass
Low Pressure Ports	5	4	4
High Pressure Ports	2	2	1
Swivel Turret	✓		
Nitrox Compatible	Standard to 40%	Standard to 40%	Standard to 100%
4,351 psi (300 Bar) DIN Fitting	Optional	Optional	Standard
Sealed Valve Design	✓	✓	
Coldwater / Environmental Seal Protection	✓	✓	
Weight	1.7 lb (78.4 kg)	21 oz (.59 kg)	.52 lb (1.14 kg)
Factory Set Intermediate Pressure	138 – 142 psi 9.5 – 9.8 Bar	138 – 142 psi 9.5 – 9.8 Bar	140 – 145 psi 9.7 – 10 Bar
Pressure Drop	20 psi 1.38 Bar	9 psi .6 Bar	13 psi .89 Bar
CE Approved	✓	✓	✓

200LX CE

"Whether it's a technical diver in a cave at 300 ft or a recreational diver on a reef at 40 ft, we only make our regulators one way: to the highest possible standard." — Bob Hollis

Our flagship regulator is the 200LX + DCX Regulator, designed by divers for divers. Every feature is designed with high performance and superior manufacturing at every step. The 200LX can be converted from a right-handed hose configuration to a left-handed hose configuration in a manner of minutes. The valve of the 200LX is "PVD" Industrial Plated. PVD is a super-hard coating that is by far the most durable coating available today. Superior quality that will outlast any traditional plating. The front metal ring, packing nut and inhalation knob are also "PVD" Plated.

All LX regulators come standard with MiFlex hoses and orthodontic mouthpieces with dual color tabs. It comes standard in both YOKE or DIN configuration

- Pneumatically balanced PVD plated brass valve results in smooth, easy breathing
- Reversible demand valve, can be converted from right-handed hose configuration to left-handed hose configuration
- Diver adjustable inhalation knob, allows diver to customize inhalation effort
- Adjustable Dive/Pre-Dive switch: large Venturi lever has a soft rubber grip, which makes it easy to locate and use
- Ergonomic exhaust channels bubbles away from field of view and reduces exhaust effort
- Improved orthodontic mouthpiece with dual color tabs
- PVD plated stainless steel metal ring, adjustable knob and Dive/Pre-Dive end cap
- MiFlex braided hose
- Paired with the new DCX 1st stage
- 2-Year service interval with inspection



PHYSICAL VAPOR DEPOSITION (PVD)

Physical Vapor Deposition (PVD) is a time-tested proven technology that has been used for decades in other industries and is now available for specific Hollis products. PVD is a collective set of processes used to deposit thin layers of material, typically in the range of few nanometers to several micrometers. This state-of-the-art process provides a superior alternative to traditional "Chrome Plating", which is environmentally-friendly and provides long-lasting durability.

PART NO.	ITEM
240.2010.07.M	200LX + DCX YOKE
240.2011.07.M	200LX + DCX DIN
240.2000.LX	200LX 2ND STAGE BLK

150LX CE

150LX regulator provides the ultimate in breathing performance with a moderate price tag. Based on the 200LX but without the adjustable inhalation control and PVD plating.

This second stage is paired either with the lightweight and cold water rated DC7 first stage for the perfect lightweight travel combination for single tanks, or the HO2 first stage for deco stops and ready for oxygen service.

The front metal ring, packing nut and end cap are stainless steel.

All LX regulators come standard with MiFlex hoses and orthodontic mouthpieces with dual color tabs. It comes standard in both YOKE or DIN configuration.

Pneumatically balanced chrome-plated brass valve results in smooth, easy breathing

Reversible demand valve, can be converted from right-handed hose configuration to left handed hose configuration

Adjustable Dive/Pre-Dive switch: large Venturi lever has a soft rubber grip, which makes it easy to locate and use

Ergonomic exhaust channels bubbles away from field of view and reduces exhaust effort

Improved orthodontic mouthpiece with dual color tabs

Stainless steel cosmetic ring

MiFlex braided hose

Suitable for coldwater diving

Paired with the DC7 1st stage as primary regulator

Paired with HO2 1st stage as O2 regulator
(O2 cleaned in sealed bag)

2-Year service interval with inspection



HO2



DC7



150LX OCTO

PART NO.	ITEM
240.1503.07.M	150LX + DC7 DIN
240.1504.07.M	150LX + DC7 YOKE
240.1502.19	150LX + HO2 DIN (OXYGEN REGULATOR)
240.3150.M	150LX OCTOPUS
240.1500.LX	150LX 2ND STAGE BLK
240.1501.LX	150LX 2ND STAGE GRN W/40" GRN MIFLEX HOSE

500SE €

TURNING REGULATORS ON THEIR SIDE

The 500SE utilizes a servo controlled valve to provide precision airflow and unparalleled performance for both air and trimix divers in a side exhaust configuration. To achieve this, we have perfected the original "lever-servo valve" we designed over 35 years ago. Overbalanced diaphragm first stage also provides ideal hose routing for both backmount and sidemount users and optimum performance regardless of depth.

Patented orthodontic mouthpiece for comfort and reduced jaw fatigue

Pneumatically balanced servo valve system

Standard with 30 in (76 cm) MiFlex hose

Easily disassembled without the use of tools and underwater if necessary

Left or right positioning—no upside-down

Boltsnap tie point

First stage configuration: DC7



REGULATORS

DCX €

Hollis' flagship 1st stage is the DCX, designed by divers for divers. Every feature is designed with high performance and superior manufacturing at every step.

The DCX is surrounded by the most durable coating available today, DLC. The DCX was been redesigned to reduce weight while improving angle of LP and HP ports to maximize hoses routing. Hollis has made it an industry standard to include the 5th LP port making the DCX the diver's first choice for back-mounted doubles, sidemount or even for the recreational diver that demands the same performance as a technical diver.

DLC "industrial" plating - DLC (Diamond Like Carbon) is a super-hard coating that is by far the most durable coating available today. Superior quality that will outlast any traditional finish.

Unique over-balanced, diaphragm design. As the diver descends, the over-balancing feature allows the medium pressure gas in the hose to increase at a rate faster than ambient. This results in superior performance at depth.

2 HP ports and 5 LP ports for optimum hose routing

5th port allows for side-mount or twin cylinder set ups

An environmental dry system keeps water out of the main spring chamber thus preventing ice buildup and keeping salt and contamination out

Nitrox compatible to 40%

2 HP and 4 LP

DIN - 300 BAR



PART NO.	ITEM
240.3572	DCX - YOKE
240.3573	DCX - DIN

DC7

High performance over-balanced DC7 1st stage provides progressively greater intermediate pressure as depth and gas density increases for superior gas delivery under the most extreme conditions.

Fixed hose routing ideal for both backmount and sidemount configuration

Environmental sealing prevents internal corrosion, contaminants, and icing of the first stage

Withstands rigorous CE standard for coldwater performance

Nitrox compatible to 40%

2 HP and 4 LP

DIN - 300 bar



PART NO.	ITEM
240.3567	DC7 - YOKE
240.3568	DC7 - DIN

H02

The H02 1st Stage is certified for up to 100% Oxygen Service thanks to highly specialized component materials and manufacturing processes. Cleaned and assembled in a clean room environment with specially designed materials, halocarbon based lubricants and color-coded for easy identification. The Regulator First Stage weighs 8.3 oz (235.3 g).

Flow-By Piston design 1st stage

Non-balanced flow-by piston

4,500 psi (300 Bar) DIN connection

DIN Hand-Wheel Connector: Oxygen green for easy identification for oxygen-use-only

Material: Durable and corrosion resistant marine-grade chrome plated brass

4 LP threaded ports

1 HP threaded port



PART NO.	ITEM
240.3558	H-02 PISTON - O2 - DIN

MOD-1

Known simply as the “MOD-1”, the patented Kirby Morgan two-chamber (Mask & POD) design opens up a myriad of configuration possibilities with both Open Circuit systems and Closed Circuit Rebreather systems.

Used by United States Marines Combat Divers and Military Dive Teams around the world, professional underwater videography teams and scientific dive teams, the Kirby Morgan Modular Full-Face Mask represents a giant step-up in safety, versatility, and convenience over conventional Full-Face Masks (FFMs).

The MOD-1 utilizes two separately sealed cavities in a single FFM design. The mask acts exactly like an independently sealed dive mask with a lower Breathing POD that contains the mouthpiece and, if installed, the communications microphone.



SCUBA POD



MOD-1, W/O POD



MOD-1 + POD

PART NO.	ITEM
500SE	
240.3500.07.M	500SE + DC7 YOKE
240.3501.07.M	500SE + DC7 DIN
240.3625	500SE 2ND W/O HOSE
MOD-1	
240.4800.04	MOD-1, W/O POD
240.4800.06	MOD-1, SCUBA POD ONLY

REGULATOR ACCESSORIES

PART NO.	ITEM
FIRST STAGES	
240.3558	H.O2 PISTON - O2 - DIN
240.3567	DC7 - YOKE
240.3568	DC7 - DIN
240.3572	DCX - YOKE
240.3573	DCX - DIN
SECOND STAGES	
240.3625	500SE 2ND - W/O HOSE
240.2000.LX	200LX 2ND STAGE BLK
240.1500.LX	150LX 2ND STAGE BLK
240.1501.LX	150LX 2ND STAGE GRN W/40" GRN MIFLEX HOSE
REGULATOR ACCESSORIES	
240.3001	OPRV - FIRST STAGE
240.3002	DIN TO YOKE ADAPTER
240.3004	ANGLE ADAPTER
240.7031.07	MOUTHPIECE, BK
240.8616.04	MOUTHPIECE, RED
240.9215	DCX DIN TO YOKE CONVERSION KIT
240.9211	DIN CONVERSION KIT - DC REG
240.9212	PORT CONVERSION KIT - DC1
240.4152	REG NECKLACE, ADJUSTABLE, BK
240.4018	LX COLOR KIT: YELLOW

PART NO.	ITEM
REGULATOR ACCESSORIES CONT'D	
240.4019	LX COLOR KIT: GREEN
240.4007	LX COLOR KIT: BLACK
240.4100	LX PLASTIC RING
240.4200	LX STAINLESS STEEL RING
240.4300	LX BLACK ANODIZED RING
204.2382.060	LP HOSE, 60"/152CM
204.2382.084	LP HOSE, 84"/213CM
204.2382.022.M	HOSE, MIFLEX, 22"/56CM
204.2382.032.M	HOSE, MIFLEX, 32"/81CM
204.2383.036.M	HOSE, MIFLEX, 36"/92CM YELLOW
204.2382.040.M	HOSE, MIFLEX, 40"/102CM GREEN
REGULATOR SERVICE KITS	
220.9206	SERVICE KIT, DC7, 1ST STG
220.9208	SERVICE KIT, 500SE 2ND
220.9210	SERVICE KIT, HO2 DIN 1ST
220.9213	SERVICE KIT, 212/321/221/100LX/150LX/200LX, 2ND STG
220.9214	SERVICE KIT, DC1/DC3/DCX, 1ST STG

BUOYANCY

COMPLETE HARNESS SYSTEMS



ST SYSTEMS
(ASSEMBLED)
€



ST ELITE SYSTEMS
(ASSEMBLED)
€



DT SYSTEM
(ASSEMBLED)
€

WINGS



ST WINGS
€



DT WINGS
€

BUOYANCY COMPENSATORS



HD-200
€



L.T.S.
€



SMS 75
€



KATANA 2
€

HARNESS ONLY



HTS 2
€



ELITE 2
€



SOLO
€

BUOYANCY COMPARISON CHART

BACKMOUNT

BUOYANCY

	Adjustable	Quick Release	Backpad	Single Cylinder	Twin Cylinder	Rapid Exhaust Valve	Comfort Padding	Weight Integrated
HD-200	✓	✓	✓	✓		✓	✓	✓
L.T.S.	✓	✓	✓	✓		✓	✓	✓
HTS 2	✓	✓	✓	✓	✓		✓	Optional
Elite 2	✓	✓	✓	✓	✓		✓	Optional
Solo	✓		✓	✓	✓			Optional

SIDEMOUNT

	Adjustable	Quick Release	Backpad	Backmount Compatible	Dual Bladder	Comfort Padding	Weight Integrated
SMS 75	✓	✓	✓	✓		✓	Optional
KATANA 2	✓		✓				✓
KATANA 2 DUAL	✓		✓		✓		✓

ST & DT SERIES WINGS

	Single Cylinder	Twin Cylinder	Single Bladder	Dual Bladder
ST22	✓		✓	
ST35	✓		✓	
DT50		✓	✓	
DT45 DUAL		✓		✓

HD-200 €€

Comfort, function and durability, the HD-200 is everything the advanced sport diver could ask for. Fitted with a combination of Tech/Rec features that provide ultimate comfort and function. Heavy-duty construction and innovative design make this BC best in class.

35 lb (15.9 kg) bladder S and M sizes, 45 lb (20.4 kg) bladder L and XL sizes
1000D Cordura with PU lamination outer shell & 420D Nylon internal bladder
Contoured, lightweight backpack with backpad, lumbar support, and a rolled neoprene comfort neck
10 lb (4.5 kg) pinch-and-pull weight pockets
3 lb (1.36 kg) non-dumpable rear weight pockets
System weight: 9.4 lb (4.3 kg)
Traditional 2 in (5 cm) waist strap with stainless buckle
2 in (5 cm) Nylon crotch strap with quick release buckle and 2 in (5 cm) SS D-ring
New comfort molded backpad

L.T.S. €€

LIGHT TRAVEL SYSTEM

The Light Travel System (L.T.S.) is our warm water solution for traveling divers and destinations where weight restrictions are limited. Incorporating key features from our popular HD200, the L.T.S. is a weight integrated back inflation design with 30 lb (13.6 kg) of lift, suitable for single AL80s and steel 85s. Its simple, non-modular design stows easy and weighs only 5 lb (2.26 kg)

Ideal for traveling divers, weighs only 5 lb (2.26 kg)
30 lb (13.6 kg) of lift capacity
Comfortable backpad
Chest and hip D-rings for accessories or sling bottle
Rugged 1000D nylon outer cover with 420D internal bladder
5 lb (2.26 kg) dumpable integrated weight system
Available in four sizes SM, MD, LG, XL



PART NO.	ITEM
	HD200
208.1151.002	HD-200 BC, SM
208.1151.003	HD-200 BC, MD
208.1151.005	HD-200 BC, LG
208.1151.006	HD-200 BC, XL
	LTS
208.1110.002	LTS BC, SM
208.1110.003	LTS BC, MD
208.1110.005	LTS BC, LG
208.1110.006	LTS BC, XL

KATANA 2 €

Katana 2 is designed for the dedicated sidemount diver and every configuration imaginable, from warm water to cold, wet to dry, steel to aluminum tanks, open circuit to sidemount CCR. The Katana 2 is the answer to the evolving minimalist, low profile and modular sidemount category.

“QFS” Quick Fit System offers fine tuning of the torso height between small and large divers for a true one size fits all

Lift capacity is 40 lbs (18 kg) with innovative wing design to keep diver profile even lower than the competition and without the “turtle shell effect” which causes drag

Standard weight capacity 20 lbs. (9 kg) to offset added buoyancy in cold water with drysuits and thick undergarments

Design allows for an “H” or “Y” style harness configuration, depending on user preference

Easy to reach attachment points for accessories on the side of the wing

Innovative top dump allows venting of gas without breaking trim or reaching behind the wing like in other designs

Integrated sidemount CCR mount

Single bladder option ideal for recreational sidemount with two cylinders or in a drysuit for redundancy / Dual bladder option ideal for technical dives in a wetsuit

Stainless hardware hardcoated with Black PVD treatment

All fabric and embroidery black color



OPTIONAL ACCESSORIES:



Storage Pocket



Butt-Plate



Rigging Kit



H Style Kit



Katana 2 Red



Katana 2 Dual

PART NO.	ITEM
208.1381	KATANA 2
208.1382	KATANA 2 DUAL
208.1265	KATANA BUTTPLATE (BACKPLATE COMPATIBLE)
208.1266	STORAGE POCKET WITH SS SNAPS
240.1550	SMS MAINS RIGGING KIT
208.1383	KATANA 2 H STYLE KIT

SMS 75 €

Hollis has become a leader in the sidemount market. It is not just a fad and not just a tool for cavers, it's here to stay and is growing. The SMS 75 is an evolution from years of sidemount development. While it will cater more to hardcore cave divers, SMS 75 was created to handle all environments. Proper trim is key, and the wing is designed to promote horizontal diving with increased lift towards the hips where it's needed most. The SMS 75 will also support rear-mounted tanks and reversible inflator positions.

- Lift capacity is 40 lb (18 kg)
- Trapezoid shape to promote horizontal trim
- Adjustable and removable wing bungee
- Designed for cave or open water sidemount
- Cam slots for single tank and grommets at 11" (28cm) for banded doubles
- Reversible Inflator and dump assembly
- Rigging kit included: tank bungees, SS Cam bands, SS Bolt snaps and nylon line
- Includes sternum strap and crotch strap
- Inner located elbow to avoid overhead interference



BUOYANCY

PART NO.	ITEM
208.1375.003	SMS75 COMPLETE - SM/MD - SINGLE PKG
208.1375.005	SMS75 COMPLETE - LG/XL - SINGLE PKG
208.1375.006	SMS75 COMPLETE - XXL - SINGLE PKG

ST SYSTEMS

SIMPLE. RUGGED. MINIMALIST.

The ST System combines our most popular single tank components into one, both including the Solo harness for the ultimate in simplicity and streamlining. This kit is preassembled from the factory and includes unique components depending on the configuration.

For warm water and travel destinations we offer the ST Travel, which includes the ST22 Wing Aluminum Backplate 2.0, Delrin cam bands and Backplate Backpad 2.0. While those diving in colder waters can choose the ST System, which includes the ST35 Wing, Stainless Steel Backplate 2.0 and Backplate Backpad 2.0.

ST Travel System shown here.



LX2 Weight Pockets sold separately
PN 208.0016

ST TRAVEL SYSTEM INCLUDES:



ST22 Wing



Solo Harness with Aluminum Backplate 2.0



Backplate Backpad 2.0



Delrin Cam Bands

ST SYSTEM INCLUDES:



ST35 Wing



Solo Harness with Stainless Steel Backplate 2.0



Backplate Backpad 2.0



Stainless Cam Bands

PART NO.	ITEM
208.8001.022	ST TRAVEL SYSTEM
208.8001.035	ST SYSTEM

ST ELITE SYSTEMS

FULL-FEATURED COMFORT

The ST Elite System combines our most popular single tank components into one, including the Elite 2 harness for the ultimate in features and comfort in a backplate and harness system. This kit is preassembled from the factory and includes unique components depending on the configuration.

For warm water and travel destinations we offer the ST Elite Travel, which includes the ST22 Wing Aluminum Backplate 2.0, Delrin cam bands and Backplate Backpad 2.0. While those diving in colder waters can choose the ST Elite System, which includes the ST35 Wing, Stainless backplate 2.0 and Backplate Backpad 2.0.

ST Elite System shown here.



ST ELITE TRAVEL SYSTEM INCLUDES: ST ELITE SYSTEM INCLUDES:



ST22 Wing



Elite Harness with Aluminum Backplate 2.0



Backplate Backpad 2.0



Delrin Cam Bands



ST35 Wing



Elite Harness with Stainless Steel Backplate 2.0



Backplate Backpad 2.0



Stainless Cam Bands

PART NO.	ITEM
208.8002.022	ST ELITE TRAVEL SYSTEM - XS/S
208.8003.022	ST ELITE TRAVEL SYSTEM - MD/LG
208.8005.022	ST ELITE TRAVEL SYSTEM - XL/XX

PART NO.	ITEM
208.8002.035	ST ELITE SYSTEM - XS/SM
208.8003.035	ST ELITE SYSTEM - MD/LG
208.8005.035	ST ELITE SYSTEM - XL/XXL

DT SYSTEM

NO FRILLS EXPLORATION ESSENTIALS

The DT System is designed for the demanding doubles diver, with all the components for your backplate and wing kit in one, preassembled from the factory. This system includes the new DT50 doubles wing with design that is ideal for larger double cylinders and colder waters. Also includes the Solo Harness, with Stainless Backplate 2.0 and backpad. Add a set of cam bands for the occasional single tank dive.

DT SYSTEM INCLUDES:



DT50 doubles wing



Solo Harness with
Stainless Steel Backplate 2.0






Backplate Backpad 2.0



PART NO.	ITEM
208.8001.050	DT SYSTEM

HOLLIS BACKPLATE SYSTEMS OVERVIEW

BUOYANCY

									
SYSTEMS:	ST SYSTEM	ST TRAVEL SYSTEM	ST ELITE SYSTEM XS/SM	ST ELITE SYSTEM MD/LG	ST ELITE SYSTEM XL/XXL	ST ELITE TRAVEL SYSTEM XS/SM	ST ELITE TRAVEL SYSTEM MD/LG	ST ELITE TRAVEL SYSTEM XL/XXL	DT SYSTEM
COMPONENTS:	208.8001.035	208.8001.022	208.8002.035	208.8003.035	208.8005.035	208.8002.022	208.8003.022	208.8005.022	208.8001.050
ST 22 WING W/ SLOTS (22LBS) 208.1254.022		•				•	•	•	
ST 35 WING W/ SLOTS (35LBS) 208.1254.035	•		•	•	•				
DT 50 WING (50LBS) 208.1254.050									•
DT 45 DUAL WING (45LBS) 208.1256.045									
SOLO HARNESS SYSTEM 208.1260	•	•							•
ELITE 2 HARNESS SYSTEM - XS - SM 208.1222.001			•			•			
ELITE 2 HARNESS SYSTEM - MD - LG 208.1222.003				•			•		
ELITE 2 HARNESS SYSTEM - XL - XXL 208.1222.006					•			•	
BACK PLATE BACK PAD, 2.0 208.1267	•	•	•	•	•	•	•	•	•
ALUMINUM BACK-PLATE, BLACK, 2.0 208.1291.000		•				•	•	•	
STAINLESS STEEL BACKPLATE, 2.0 208.1296.000	•		•	•	•				•
CAM BAND (STAINLESS) 208.1070.010	•		•	•	•				
CAM BAND (DELIRIN) 208.1070.020		•				•	•	•	

ST WINGS

ST wing design features a 360° tapered profile, to increase lift towards the hips, promoting better horizontal trim in dive position while still allowing perfect surface floatation.

The ST22 is designed for warm water dives in aluminum cylinders, where low lift and maximum streamlining is preferred. Alternatively the ST35 is an excellent choice for a go-anywhere wing with the added lift for those local cold-water dives and heavier steel cylinders, but still streamlined enough for travel destinations.

Tank slots and tank cradle are included on both models, which allows you to connect your wing and backplate without the need for a single tank adapter plate. This reduces weight and unnecessary accessories while traveling.

The bladder is a two-piece design, with a rugged 1680 Cordura® nylon outer shell to prevent abrasion and punctures, and a 420-denier nylon inner bladder to maintain the buoyancy. The lower OPV is easy to reach for venting gas while horizontal or heads down, and the inflator design is a K-style with a rugged crushproof rubber hose for easy positioning and oral inflation should you need to.

ST22 - 22 lb lift (10 kg)

ST35 - 35 lb lift (16 kg)

Welded flange and one piece retainer for servicing without the need for tools

HD Laminated 1680D Cordura® outer shell

420 nylon internal bladder

Elbow offset to avoid tank valve/regulator interference and streamlined hose routing

Lower left pull relief valve

Cam band slots and tank cradle built in

5 YEAR WARRANTY



ST 22 WING



ST 35 WING

PART NO.	ITEM
208.1254.022	ST 22 WING W/SLOTS 22 LB (10 KG)
208.1254.035	ST 35 WING W/SLOTS 35 LB (16 KG)

DT WINGS

The DT line of wings are designed for double cylinders. The DT50 features a 360° tapered profile for heavier cylinders, to increase lift towards the hips, promoting better horizontal trim in dive position while still allowing perfect surface flotation. While the DT45 Dual features a more consistent 360° flotation for lighter aluminum cylinders with a redundant air cell. Target audience for the DT45 dual is warm water, banded aluminum cylinders in a wetsuit where backup inflation is mandatory. While the DT50 is focused on the dedicated drysuit diver, with heavier cylinders in cold water.

Tank slots are included on both models, which allows the occasional single tank dive without the need for a single tank adapter plate. This reduces weight and unnecessary accessories while traveling.

The bladder is a two-piece design, with a rugged 1680 Cordura® nylon outer shell to prevent abrasion and punctures, and a 420-denier nylon inner bladder to maintain the buoyancy. The lower OPV is easy to reach for venting gas while horizontal or heads down, and the inflator design is a K-style with a rugged crushproof rubber hose for easy positioning and oral inflation should you need to.

DT50 - 50 lb (23 kg) lift

DT45 Dual - 45 lb (20 kg) lift

Welded flange and one piece retainer for servicing without the need for tools

HD Laminated 1680D Cordura® outer shell

420 nylon internal bladder

Central elbow to avoid tank valve/regulator interference

Lower left pull relief valve

Cam band slots

5 YEAR WARRANTY

CORDURA
F A B R I C



DT 50 WING



DT 45 DUAL WING

BUOYANCY

PART NO.	ITEM
208.1254.052	DT 50 WING (50 LBS)
208.1256.045	DT45 DUAL WING (45 LBS)

HTS 2 €€ HARNESS SYSTEM

HTS 2 (Harness Tech System) is a soft pack harness designed to accommodate both single and double cylinder configurations, without the need for a backplate.

- Streamlined modular harness system
- Comfort back pad with lumbar support
- Stainless steel D-rings and cam buckle included
- Adjustable sternum strap with 2 mounting positions
- Added carry handle
- Accommodates mounting of new S25-LX and S38-LX wings without STA
- Adjustable padded shoulder straps
- Optional 10 lb (4.5kg) interchangeable quick-release weight pockets
- 2 in (5.1 cm) webbing crotch strap with vehicle hook ring
- No-slip cam bands with plastic buckles



SOLO €€ HARNESS SYSTEM

Designed to meet all the needs of demanding technical divers, the Solo Harness System is clean, simple, and foolproof!

- Streamlined design enhances comfort with less drag
- Continuous one piece harness system limits failure potential
- Stainless steel D-rings and cam buckle included
- Removable shoulder pads accept stainless steel D-rings
- System weight (harness only): 1 lb (0.45kg)
- Solo Harness: One Size, Trim-to-fit



Backplate
Available
Separately

ELITE 2 €€ HARNESS SYSTEM

Tech/Rec is at its best with the Elite 2 Harness. The Elite 2 Harness System offers you all the features of a technical harness with the added comfort and adjustability that recreational divers look for.

- Adjustable shoulder straps with quick release buckles
- Easier donning and doffing of equipment
- Adjustable and removable shoulder pads
- 316 marine grade stainless steel
- Adjustable sternum strap included allows for custom fit
- System weight (harness only): 1.7 lb (0.77 kg)



Backplate
Available
Separately

PART NO.	ITEM
	HTS 2
208.1202.002	HTS 2,W/OPKTS,SM
208.1202.003	HTS 2,W/OPKTS,MD
208.1202.005	HTS 2,W/OPKTS,LG
208.1202.006	HTS 2,W/OPKTS,XL
208.1202.007	HTS 2,W/OPKTS,XXL

PART NO.	ITEM
208.1260	SOLO HARNESS SYSTEM
208.1222.001	ELITE 2 HARNESS SYSTEM - XS - SM
208.1222.003	ELITE 2 HARNESS SYSTEM - MD - LG
208.1222.006	ELITE 2 HARNESS SYSTEM - XL - XXL
208.1291.000	ALUMINUM BACKPLATE, BLACK, 2.0
208.1296.000	STAINLESS STEEL BACKPLATE, 2.0

STAINLESS AND ALUMINUM BACKPLATES 2.0

Our 2.0 backplate line is the foundation for the Hollis technical harness systems. Both feature improved ergonomics for a comfortable fit, but are still short enough to fit smaller frame divers.

The aluminum version weighs in at 1.5 lb or just under a kilo, and the stainless version weighs in at 6.5 lb or just under 3 kilos.

Both are laser cut and CNC bent, which give this awesome new appearance. The stainless version is 304 stainless and has a bead blast finish to avoid scratching, so it will continue to look this way after many years of use. The Aluminum version is laser cut from 6061 aluminum and hard anodized in black for a marine grade finish.

Geometry of the webbing slots is similar to our prior design to ensure reverse compatibility for all Hollis buoyancy accessories, so if you have a current Hollis harness, wing or weight system, this new plate will fit.

Both of these are available individually and as part of the Hollis Complete Systems.

STAINLESS BACKPLATE 2.0

AISI 304 Stainless

4mm thickness

Sandblasted finish

Electropolished & chemically passivated

Laser cut & CNC bent

6.5 lb (3 kg)

ALUMINUM BACKPLATE 2.0

EN AW 6061 aluminum

3mm thickness

Hard Anodized Marine Black

Laser cut & CNC bent

1.5 lb (1 kg)



STAINLESS STEEL
BACKPLATE 2.0



ALUMINUM
BACKPLATE 2.0

PART NO.	ITEM
208.1291.000	ALUMINUM BACKPLATE, BLACK, 2.0
208.1296.000	STAINLESS STEEL BACKPLATE, 2.0

LX2 12LB WEIGHT SYSTEM

The LX2 provides weight versatility options with an ease of use design. Simple pinch and pull buckle design securely stows your weights during the dive. There is also a large nylon handle to carry or easily ditch your weights if needed. The pouch itself is zippered and holds 12 lb (5.4 kg) total, but is partitioned to isolate weights within the pouch. The benefit there is if you only have say 5 lb (2.3 kg) in the pocket, the partition will avoid it shifting around during the dive. This system is also reverse compatible to allow use with older Hollis backplates and harnesses.



BACKPLATE BACKPAD 2.0

The Backplate Backpad 2.0 is a comfortable two-piece design with added lumbar support, which easily pivots out of the way of your doubles tank bolts and cam bands when assembly or disassembly is needed. Sold as an accessory but also included with our 2.0 Technical Harness systems.

Note: Only compatible with Hollis 2.0 Backplates.



PART NO.	ITEM
	LX2 WEIGHT SYSTEM
208.0016	LX2 WEIGHT SYSTEM (12LB) - SOLO, ELITE2, HTS2
208.0027	LX2 WEIGHT POUCH (12LB) - REPLACEMENT
	BACKPLATE BACKPAD 2.0
208.1267	BACKPLATE BACKPAD 2.0

BUOYANCY ACCESSORIES

PART NO.	ITEM
208.1291.000	ALUMINUM BACKPLATE, BLACK, 2.0
208.1296.000	STAINLESS STEEL BACKPLATE, 2.0
240.1550	SMS MAINS RIGGING KIT
240.1700	DELUXE STAGE KIT-SMALL FOR AL40
240.1800	DELUXE STAGE KIT-LARGE FOR AL80
208.0016	12LB LX2 WEIGHT SYSTEM - SOLO, ELITE2, HTS2
208.0027	12LB LX2 WEIGHT POUCH - REPLACEMENT
208.0025.000	10LB WEIGHT POUCH - REPLACEMENT -- FOR LX - (ELITE, SOLO, HTS2) (SINGLE)
208.0026.000	WT- POCKET- HD200- SINGLE-REPLACE
208.0030.000	5LB NON-DITCHABLE OPTIONAL POCKETS (PAIR)
208.0042	SMS WEIGHT SYSTEM PLATE
208.1060.016	INFLATOR SYSTEM W/ ELBOW 16" /41CM
208.1061.016	INFLATOR SYSTEM W/ RE VALVE 16" /41CM
208.1062	ELBOW FITTING
208.1063	INFLATOR ONLY, STD K STYLE
208.1065.013	CORRUGATED HOSES 13" /33CM
208.1065.016	CORRUGATED HOSES 16" /41CM
208.1065.019	CORRUGATED HOSES 19" /48CM
204.2381.012	LP INFLATOR HOSE, 12"/25CM (KATANA 2)
204.2381.022	LP INFLATOR HOSE, 22"/56CM
204.2381.030	LP INFLATOR HOSE, 30"/76CM
204.2381.032	LP INFLATOR HOSE, 32"/81CM
208.1034	HTS DOUBLE MOUNTING PLATES (SET OF TWO)
208.1070.002	SINGLE TANK ADAPTER BOLT KIT
208.1070.010	CAM BAND (STAINLESS)
208.1070.020	CAM BAND (DELIN)
208.1071.001	SINGLE TANK ADAPTER W/BOLTS & NUTS, V2
208.1322	RUBBER TANK WRAP KIT (PAIR)
208.1026	OP VALVE PULL DUMP
208.1028	STAINLESS QUICK RELEASE BUCKLE

PART NO.	ITEM
208.1030	MASK POCKET
208.1032	CROTCH STRAP, 2-0-INCH WEBBING W/ SCOOTER RING
208.1038	SMS50/SMS75 RAIL KIT (1 SET)
208.1040	BUNGEE KIT PAIR, SMS75 HARNESS
208.1267	BACK PLATE BACK PAD, 2.0
208.3350	RE CAP
208.336.337	RE SEAT
208.568.210	O-RING
19720.001.003	VALVE HOUSING
208.340.13	VALVE WITH 13" CABLE
208.340.16	VALVE WITH 16" CABLE
208.340.19	VALVE WITH 19" CABLE
208.3430	SPRING
208.1065.013	CORRUGATED HOSES 13" /33CM
208.1065.016	CORRUGATED HOSES 16" /41CM
208.1065.019	CORRUGATED HOSES 19" /48CM
208.22739	RUBBER RING
208.1255.025	REPL- BLADDER, S25
208.1255.038	REPL- BLADDER, S38
208.1255.045	REPL- BLADDER, C45
208.1255.060	REPL- BLADDER, C60
208.1254.022.B	ST 22 WING, BLADDER ONLY (22 LB/10 KG)
208.1254.035.B	ST 35 WING, BLADDER ONLY (35 LB/16 KG)
208.1254.052.B	DT 50 WING, BLADDER ONLY (50 LB/22.7 KG)
208.1256.045.B1	DT 45 DUAL WING, BLADDER ONLY, PRIMARY (45 LB/20.5 KG)
208.1256.045.B2	DT 45 DUAL WING, BLADDER ONLY, REDUNDANT (45 LB/20.5 KG)

INSTRUMENTS

INSTRUMENTS



LOW-PROFILE BRASS SPG



BRASS SPG



LARGE PONY
BOTTLE GAUGE

LOW-PROFILE BRASS SPG

The Low-Profile Brass SPG with scratch-resistant lens, high-contrast background, luminescent needle, low weight, and small size allow for a more streamlined rigging and are ideal for stage and deco bottles.

High-contrast black background and white markings

Luminescent needle

Standard with Air Spool and Viton O-rings

Suitable for oxygen service

Available in 0-5000 PSI or 0-400 BAR

Satin coated brass housing coated brass housing with Bourdon tube

Scratch-resistant plastic lens

1.5 in (38.1 mm)



BRASS SPG

The Hollis Brass Pressure Gauge is a solid and compact brass SPG. This rugged, easy-to-read gauge works great as a primary or even backup pressure gauge for the beginner to the most advanced technical diver. Gauge has a luminescent face for easy reading in low light or night diving conditions. Pressure gauge module has a durable tempered glass scratch resistant lens.

Luminescent faceplate

Standard with Air Spool and Viton O-rings

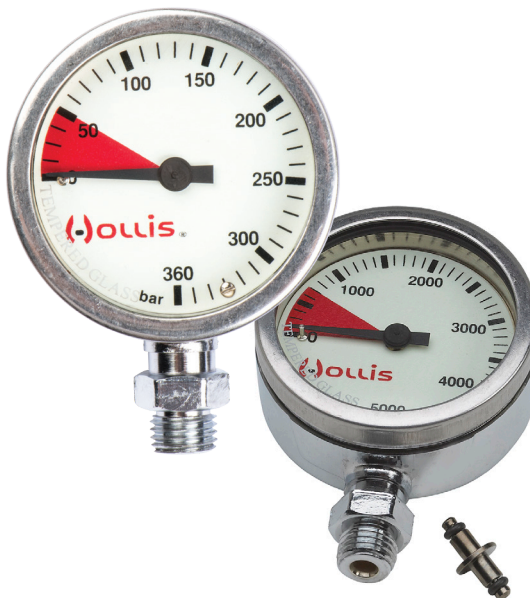
Suitable for oxygen service

Available in 0-5000 PSI or 0-360 BAR

Chrome-plated brass housing with Bourdon tube

Scratch-resistant tempered glass

2 in (50.8 mm) size



PART NO.	ITEM
204.2311	PRESSURE GAUGE MODULE BAR -- METAL W/O BOOT
204.2309.07	PRESSURE GAUGE MODULE BAR LOW-PROFILE BLK-- METAL W/O BOOT

LARGE PONY BOTTLE GAUGE CE

The Hollis Pony Bottle Gauge is a tiny gauge that easily connects to the 7/16" (1.1 cm) high-pressure port of your pony bottle regulator or other alternate tank regulator to show pressure in an easy-to-read display. Any diver who has used a pony bottle knows the hassle involved with trying to find out how much air is in the tank. Switching regulators to view the primary pressure gauge or adding a separate pressure gauge to the pony bottle is a problem. Now with the Hollis Pony Bottle Gauge, all those headaches are over.



INSTRUMENTS

Eliminates use of standard hoses pressure gauge
Compact small design
Large numbers and colored indicators easy-to-read-display
Equipped with HP O-Ring Ready to Install
Suitable for oxygen service
Threads directly 7/16" (1.1 cm) First Stage HP Port
Available in 0-400 BAR
Ideal for pony bottles, deco bottles or back-up air supplies
One-way safety valve

PART NO.	ITEM
204.2318	LG PONY BOTTLE GAUGE - BAR

INSTRUMENT ACCESSORIES

PART NO.	ITEM
204.2310.S	AIR SPOOL METAL GAUGES
204.2380.006	H/P HOSE - 6"/15CM
204.2380.009	H/P HOSE - 9"/23CM
204.2380.024	H/P HOSE 24"/61CM
204.2380.028	H/P HOSE 28"/71CM



EXPOSURE

DRYSUIT



DX-300X
CE

WETSUIT



NEOTEK 4/3 WETSUIT
CE

SEMI-DRY



NEOTEK 8/7/6 V2 SEMIDRY
CE

EXPOSURE COMPARISON CHARTS

	Entry	Material	Socks	Unisex	Collar	Pockets	Hood Attached
--	-------	----------	-------	--------	--------	---------	---------------

DRYSUIT

DX-300X	Front	Trilaminate Cordura®	5mm Neoprene	✓		✓	
---------	-------	-------------------------	-----------------	---	--	---	--

SEMI-DRY

Neotek 8/7/6	Front	8/7/6 Neoprene		✓		✓	✓
--------------	-------	----------------	--	---	--	---	---

WETSUIT

Neotek 4/3	Front	4/3 Neoprene		✓		✓	✓
------------	-------	--------------	--	---	--	---	---

EXPOSURE



DX-300X

DRYSUIT

The DX-300X is our flagship technical drysuit, developed over three years in a variety of demanding conditions including cave and wreck diving where performance is critical. Benefit from comfort, maneuverability, and long-wearing durability.

The DX-300X is the benchmark expedition-grade drysuit, made from TriLaminate Cordura® for superior strength and comfort. Overall material weight is 700 g/sq.

“Outer Layer” is a heavy-duty Cordura® which offers superior puncture and abrasion resistance with incredible tear strength in excess of 300N

The middle “Butyl Mass” is constructed of 12 layers to provide long-term water integrity with superb chemical and ozone resistance

“Inner Liner” is a silk weave polyester offering the optimum comfort and softness with easy donning and doffing

Our patented BIAS cut combined with a telescopic torso increases freedom of movement, but allows for a closer fit reducing air migration

The wide, flat seam construction minimizes the risk of leaks in high risk areas

Fitted with YKK zipper

Fitted with SI TECH® Neck Tite system with Silicon seals

Fitted with SI TECH® cuff ring wrist system with Silicon seals as standard

Two large Velcro® bellows pockets with an internal D-ring

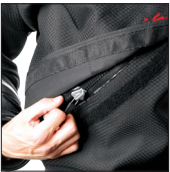
Double thick kneepads

5 mm neoprene socks

Adjustable suspenders included



EXPOSURE



Socks included with suit / Canvas overboots available from BARE



PART NO.	ITEM
277.3000.001	DX-300X W/NEOPRENE SOCKS - XS
277.3000.002	DX-300X W/NEOPRENE SOCKS - S
277.3000.003	DX-300X W/NEOPRENE SOCKS - M
277.3000.004	DX-300X W/NEOPRENE SOCKS - ML
277.3000.005	DX-300X W/NEOPRENE SOCKS - L
277.3000.006	DX-300X W/NEOPRENE SOCKS - XL
277.3000.007	DX-300X W/NEOPRENE SOCKS - XXL
277.3000.009	DX-300X W/NEOPRENE SOCKS - XXXL


NEOTEK 8/7/6 V2

SEMI-DRY

Enjoy the warmth of our Neotek 8/7/6 V2 coldwater hooded semi-dry. Constructed from a compression resistant 8/7/6 mm neoprene and a Hollis exclusive ThermaSkin inner liner. Includes a front neckdam with revolutionary G-lock horizontal front zipper for easy on/off and a tight barrier against water intrusion. Arms and legs are also sealed against leaks with an internal dam. All seams are double-glued and butt-joined with a blind stitch construction which is all covered by a unique liquid seam. Fitted with generous pockets on both the left and right thigh and comes in 9 different sizes.

- 8/7/6 mm compression-resistant and superstretch neoprene mix
- Exclusive ThermaSkin inner liner
- G-lock horizontal front zipper with internal bib
- Neck, wrist and ankle internal dams
- Seams are double-glued and butt-joined with a blindstitch
- Liquid glued seams cover entire suit
- Tech-friendly thigh pockets on both left and right thigh
- Attached hood standard
- Seams sewn and double taped for extreme protection





ECO-FRIENDLY
NEOPRENE

Neoprene production waste is recycled and reused which minimizes waste in landfills.



EXPOSURE

PART NO.	ITEM
277.2810.002	NEOTEK V2 SEMI-DRYSUIT, UNISEX, SM
277.2810.003	NEOTEK V2 SEMI-DRYSUIT, UNISEX, MD
277.2810.004	NEOTEK V2 SEMI-DRYSUIT, UNISEX, ML
277.2810.005	NEOTEK V2 SEMI-DRYSUIT, UNISEX, LG
277.2810.005.SH	NEOTEK V2 SEMI-DRYSUIT, UNISEX, L/SHORT
277.2810.006	NEOTEK V2 SEMI-DRYSUIT, UNISEX, XL
277.2810.006.SH	NEOTEK V2 SEMI-DRYSUIT, UNISEX, XL/SHORT
277.2810.007	NEOTEK V2 SEMI-DRYSUIT, UNISEX, XXL
277.2810.008	NEOTEK V2 SEMI-DRYSUIT, UNISEX, XXXL

NEOTEK 4/3 CE

WETSUIT


The Neotek 4/3 wetsuit is designed for warm-water technical dives—where exposure protection is still critical—but conditions are mild. This model follows the same pattern and design as our revolutionary 8/7/6 semi-dry and it features a horizontal front zipper and attached hood for maintaining warmth over extended dive times.

This NeoTek is constructed from a compression-resistant 4/3mm neoprene and a Hollis-exclusive ThermaSkin inner liner. It includes a front neckdam with revolutionary G-lock horizontal front zipper for easy on/off and a tight barrier against water intrusion. Arms and legs are also sealed against leaks with a rolled cuff edge. All seams are double-glued and butt-joined with a blind stitch construction which is all covered by a unique liquid seam.

And of course, true to the spirit of NeoTek, the suit comes fitted with generous utility pockets on both the left and right thigh and comes in 9 different sizes.

4/3mm compression-resistant and superstretch neoprene mix
Exclusive ThermaSkin inner liner
G-lock horizontal front zipper with internal bib
Seams are double-glued and butt-joined with a blindstitch
Seams sewn and double-taped for extreme protection
Liquid-glued seams cover entire suit
Utility thigh pockets on left and right thigh
Attached hood comes standard





ECO-FRIENDLY NEOPRENE

Neoprene production waste is recycled and reused which minimizes waste in landfills.



EXPOSURE

PART NO.	ITEM
277.2910.002	NEOTEK 4/3 WETSUIT UNISEX, SM
277.2910.003	NEOTEK 4/3 WETSUIT UNISEX, MD
277.2910.004	NEOTEK 4/3 WETSUIT UNISEX, ML
277.2910.005	NEOTEK 4/3 WETSUIT UNISEX, LG
277.2910.005.SH	NEOTEK 4/3 WETSUIT UNISEX, L/SHORT
277.2910.006	NEOTEK 4/3 WETSUIT UNISEX, XL
277.2910.006.SH	NEOTEK 4/3 WETSUIT UNISEX, XL/SHORT
277.2910.007	NEOTEK 4/3 WETSUIT UNISEX, XXL
277.2910.008	NEOTEK 4/3 WETSUIT UNISEX, XXXL

BAGS



DUFFEL BAG



MESH DUFFEL BAG



REGULATOR BAG

DUFFEL BAG

Made from a durable tarpaulin material, the Hollis Duffel is an excellent gear bag.

The bag is tough and rugged, extremely resistant to abrasions and punctures. It contains one main compartment featuring a tough D-zipper and one internal zippered pocket. Carrying the bag is an easy task with backpack shoulder straps. It also incorporates carry handles on both ends of the bag and two straps with padded handles. The bag is large enough to contain all of your dive gear and even features an ID pocket on top just by chance that someone has the same cool Hollis duffel bag as you.

D-zip main compartment with internal zippered pocket	
ID pocket on top	Backpack shoulder straps
Carry handles on both ends	Straps with padded handle
Rugged construction	Capacity: 95 Liters
Dimensions: 28 in x 16 in x 14 in (71cm x 41cm x 35.5cm)	



MESH DUFFEL BAG

Made from laminated nylon mesh, the Hollis Mesh Duffel is a great way to air out your wet equipment while keeping everything secure.

D-zip main compartment	
Shoulder carry strap included	
Carry straps with padded handle	
Rugged construction	



REGULATOR BAG

#10 YKK self-healing zippers	
Interior Velcro® loops	
1620 Denier Ballistic Nylon construction	
Dimensions: W 12 in. (30.5 cm), H 4.35 in. (11 cm), L 12 in. (30.5 cm)	



PART NO.	ITEM
217.6506.01	BAG, DUFFLE
217.6506.02	BAG, DUFFLE MESH
PART NO.	ITEM
217.6506.04	BAG, REGULATOR

MASKS AND FINS



M1
€



M3
€



M4
€



F1
€



F1 LT
€



F1 LT WHITE
€



F1 LT YELLOW
€



F2
€

MASKS COMPARISON CHART

	Frameless	Rigid Frame	Ultra Clear Glass	Standard Glass	Optical Lenses
M1	✓		✓		
M3		✓	✓		✓
M4	✓			✓	

FIN COMPARISON CHART

	Material	Angled Strap Mounts	Spring Heel Straps	Vented Blade	Generous Foot Pocket	Weight Per Fin
F1	Rubber	✓	✓	✓	✓	3.5 lb (1.6 kg)
F1 LT	SEBS Compound	✓	✓	✓	✓	2.8 lb (1.27 kg)
F2	Monoprene	✓	✓	✓	✓	2.2 lb (1 kg)

M1 CE

The M1 Mask raises the bar for optical quality and distortion-free vision. The lens is made from a highly transparent extra clear glass which is valued for its unique appearance and optical qualities. The low iron oxide content gives it optimum clarity. Its light transmittance is greater than that of conventional glass. The use of UltraClear glass results in a virtually colorless product which allows objects to remain vivid and natural. This makes the lens distortion-free and helps improve visibility, even in low-light conditions underwater.

Frameless 100% pure silicone skirt

UltraClear lenses

Wide vision and low volume

M3 CE

The M3 Mask provides visibility, the most important aspect of any dive, with distortion-free vision and superior fit. This low-profile design uses a rigid frame and two lenses with an UltraClear glass. The low iron content produces a higher light transmittance and a reduced green tint inherent in other glasses. This makes the lenses distortion free and helps improve color and visibility in low-light conditions underwater. Optical lenses from -1.5 to -8.0 diopters available.

100% pure silicone skirt

UltraClear lenses

Wide vision and low volume

4-way buckle design for superior comfort and storage if needed



GoPro mount
sold separately

M3 GOPRO MOUNT

Mount your GoPro camera and housing on your M3 Mask for hands-free photography and video. Made from durable glass filled nylon, the M3 GoPro Mount is easy-to-install on the M3 with just a hex key wrench. Once mounted, your camera and housing can be attached to your mask when needed and you can film your underwater adventures with ease.

PART NO.	ITEM
	M1 MASK
205.4500.07	MASK M1
	M3 MASK
205.4700.07	MASK M3 (BLACK)
205.4700.10	MASK M3 (WHITE/BLACK)
205.1001	M3 GOPRO MOUNT
	MASK STRAP
205.4500.STRAP	SILICONE MASK STRAP
205.1000	NEOPRENE MASK STRAP
205.1001	M3 GOPRO MOUNT

M4 €

When choosing a mask, fit and field of vision come first. The M4 Mask gives you the best of both worlds, fitting a wide variety of faces and offering superior peripheral and vertical vision. It is low profile, stows easy and carries an excellent value.

Frameless silicon skirt

Rugged mask box and adjustable mask strap included

Increased vision and low volume



F1 €

The "Original" F1 fin blends graceful movement, power, and bulletproof construction making it the standard in technical diving.

High grade, heavy-duty rubber construction

Angled strap mounts for comfort and a better transition of power

Spring heel straps with easy-grip heel tab

Multiple strap mounting positions for a fine-tuned fit

Vented blade to reduce stress while accelerating

Generously sized for drysuit boots



F1 LT €

The F1 LT is a shorter and slightly lighter version of the original F1 molded from SEBS. Now available in white and yellow!

Short blade for easier finning in confined spaces

Angled strap mounts for comfort and a better transition of power

Spring heel straps with easy-grip heel tab

Multiple strap mounting positions for a fine-tuned fit

Vented blade reduces stress while accelerating water over blade

Generously sized for drysuit boots



PART NO. ITEM

M4 MASK

205.4800.07 MASK M4

F1

214.2200.005 F1 REG

214.2200.006 F1 XL

214.2200.007 F1 XXL

F1 LT

214.2201.004 F1 LT SM

214.2201.005 F1 LT REG

214.2201.006 F1 LT XL

214.2201.007 F1 LT XXL

214.2211.002 F1 LT REG, WHITE

214.2211.005 F1 LT XL, WHITE

214.2211.006 F1 LT XXL, WHITE

214.2207.005 F1 LT REG, YELLOW

214.2207.006 F1 LT XL, YELLOW

214.2207.007 F1 LT XXL, YELLOW

F2 €

Increase your power-to-weight ratio. The patented F2 is designed to add blade surface on both the downstroke and upstroke to increase your efficiency with any type of kick.

High grade, heavy-duty monoprene construction

Angled strap mounts for comfort and a better transition of power

Spring heel straps with easy-grip heel tab

Multiple strap mounting positions for a fine-tuned fit

Vented blade to reduce stress while accelerating

Generous foot pocket with 3 sizes—Small, Regular and XL



PART NO.	ITEM
214.2300.002	F2 SMALL
214.2300.005	F2 REG
214.2300.006	F2 XL

FIN ACCESSORIES

SPRING STRAP KIT

214.8002	SPRING STRAP KIT SMALL, F1/F2
214.8006	SPRING STRAP KIT REG/XL, F1/F2
214.8007	SPRING STRAP KIT XXL, F1 /F2

FIN SIZING

	SMALL	REGULAR	XL	XXL
F1	US 4-6 EU 37-39 JP 22-24 UK 3.5-5.5	US 7-9 EU 40-42 JP 25-27 UK 6.5-8.5	US 10-12 EU 43-45 JP 28-30 UK 9.5-11.5	US 13-15 EU 46-48 JP 31-33 UK 12.5-14.5
F1 LT	US 4-6 EU 37-39 JP 22-24 UK 3.5-5.5	US 7-9 EU 40-42 JP 25-27 UK 6.5-8.5	US 10-12 EU 43-45 JP 28-30 UK 9.5-11.5	US 13-15 EU 46-48 JP 31-33 UK 12.5-14.5
F2	US 4-6 EU 37-39 JP 22-24 UK 3.5-5.5	US 7-9 EU 40-42 JP 25-27 UK 6.5-8.5	US 10-12 EU 43-45 JP 28-30 UK 9.5-11.5	US 13-15 EU 46-48 JP 31-33 UK 12.5-14.5

LIGHTS



LED 6



LED 3



LED MINI 3

LIGHTS COMPARISON CHART

	LED 6	LED 3	LED Mini3
Type	Handheld	Handheld	Handheld
Use	Primary	Back-Up	Back-Up
Material	Aluminum 6061-T6	Aluminum 6061-T6	Aluminum 6061-T6
Surface Finish	CNC machined and black anodize	CNC machined and black anodize	CNC machined and black anodize
Power	6W	3W	3W
Light Source	Cree LED T6	Cree LED R5	Cree LED R5
Lifespan	50,000 hours	50,000 hours	50,000 hours
CCT Range	5000k-7000k	5000k-7000k	5000k-7000k
Brightness	320 Lumens	290 Lumens	250 Lumens
Beam Angle	8 degrees	8 degrees	8 degrees
Battery Type	3 x C alkaline battery	3 x AA alkaline battery	3 x AAA alkaline battery
Burntime	6 hours	3 hours	3 hours
Depth Rating	600 ft (180 m)	600 ft (180 m)	600 ft (180 m)
Switch Type	Mechanical	Mechanical	Mechanical
Size	46 mm (D) x 220 mm (L)	50 mm (D) x 147 mm (L)	40 mm (D) x 127.70 mm (L)
Weight	0.34 kg (including batteries)	0.38 kg (including batteries)	0.18 kg (including batteries)

LED 6

Type	Single 6W primary light
Material	Anodized Aluminum 6061-T6
Surface finish:	CNC machined and black anodize
Light source	Cree LED T6 with lifespan of 50,000 hours
CCT range	5000k-7000k
Brightness	320 lumens
Output	1000mA
Beam angle	Concentrated 8 degrees
Battery type	3 x C alkaline battery
Burntime	6 hours
Depth rated	650 ft (200 m)
Switch type	Mechanical
Size	1.81 in (46 mm) (D) x 8.66 in (220 mm) (L)
Weight	12 oz (343 g)
Rear tie-point for boltsnap / lanyard included	
Double O-ring seals	
Custom aluminum reflector	



LED 3

Type	Single 3W backup light
Material	Anodized Aluminum 6061-T6
Surface finish	CNC machined and black anodize
Light source	Cree LED R5 with lifespan of 50,000 hours
CCT range	5000k-7000k
Brightness	290 lumens
Output	900mA
Beam angle	Concentrated 8 degrees
Battery type	3 x AA alkaline battery
Burntime	3 hours
Depth rated	650 ft (200 m)
Switch type	Mechanical
Size	1.97 in (50 mm) (D) x 5.79 in (147 mm) (L)
Weight	13.4 oz (380 g)



PART NO.	ITEM
206.3080.M	LED6 PRIMARY TORCH, PUSH BUTTON
206.3060.M	LED3 BACKUP TORCH, PUSH BUTTON

LED MINI 3

Type	Single 3W backup light
Material	Anodized Aluminum 6061-T6
Surface finish	CNC machined and black anodize
Light source	Cree LED R5 with lifespan of 50,000 hours
CCT range	5000k-7000k
Brightness	250 lumens
Output	700mA
Beam angle	Concentrated 8 degrees
Battery type	3 x AAA alkaline battery
Burntime	3 hours
Depth rated	650' (200 m)
Switch type	Mechanical
Size	1.61 in (41 mm) (D) x 5.39 in (137 mm) (L)
Weight	7.8 oz (220 g)



LIGHT ACCESSORIES

PART NO.	ITEM
206.3250	LIGHT, MINI3, BATTERY HOLDER
206.3450	LIGHT, REAR CAP ASSEMBLY, MINI3
206.3450.M	LIGHT, REAR CAP ASSEMBLY, MINI3 MAGNETIC
206.3260	LIGHT, 3W BACKUP, BATTERY HOLDER
206.3360	LIGHT HEAD ASSEMBLY, 3W BACKUP (INCLUDES HOUSING)
206.3460	LIGHT, REAR CAP ASSEMBLY, 3W BACKUP
206.3460.M	LIGHT, REAR CAP ASSEMBLY, 3W BACKUP MAGNETIC
206.3180	LIGHT, LED6, HOUSING-ALU
206.3380	LIGHT HEAD ASSEMBLY, LED6 PRIMARY
206.3480	LIGHT, REAR CAP ASSEMBLY, LED6 PRIMARY
206.3480.M	LIGHT, REAR CAP ASSEMBLY, LED6 PRIMARY MAGNETIC

PART NO.	ITEM
206.3080.M	LED6 PRIMARY TORCH, PUSH BUTTON
206.3060.M	LED3 BACKUP TORCH, PUSH BUTTON
206.3050.M	LED MINI 3 TORCH, PUSH BUTTON



SEEKER REELS

SEEK AND DEPLOY

A reliable and robust primary reel that’s easy to deploy is a necessity whether discovering a virgin cave or exploring a deep shipwreck. Our 220 ft (61m) and 400 ft (122m) primary reels combine simplicity with durability so you can get on with your deepest explorations without any worries about performance.

- Spool machined with high-tensile Delrin® for durability and abrasion resistance
- Handle is 6061-T6 hard anodized aluminum to protect against cracking or breaking
- Easy deployment with left and right handle designed for easy switching between hands
- Knurled stainless steel lockdown screw for simple “on/off” with gloves on
- Ultra-bright lines in two sizes: 220 ft (61m) is perfect for short distances such as jumps or shooting an SMB, and 400 ft (122m) is ideal for reaching the main cave line or for the tdeepest explorations
- Robust 316 Stainless hardware
- Built in rubber stop to prevent backing out of the lockdown and precise adjustment
- Molded line stopper included with both models
- Convenient winding knob provides easy and comfortable grip with gloves on
- Close tolerances to prevent line trapping during heavy use
- Sized appropriately for both warm and cold water wearing dry gloves
- Radiused edges for comfort
- All parts engineered with the strictest tolerances to eliminate line traps or failures when spooling



FINGER SPOOLS

Finger spools are most often used as a gap reel, for short distance exploration or for shooting an SMB. Small and low-profile, a spool fits nicely out of the way in a pocket or clipped off to a D-ring. The holes in the side allow for clipping in a double-ended snap anywhere along the perimeter of the spool to keep the line tight when not in use.

- Available in 100 ft (30 m) and 150 ft (45 m)
- The 100' and 150' Finger Spools are often used for shooting lift bags or as safety reel
- Smaller spools for safety and jump reels
- Spool fits in drysuit pocket, utility pocket or clipped off to a D-ring
- Available in ABS plastic
- #24 white braid cave line
- Stainless double ended clip included



REELS AND SPOOLS

PART NO.	ITEM
203.8200	SEEKER REEL, 200' (61 m)
203.8400	SEEKER REEL, 400' (122 m)

PART NO.	ITEM
203.8100	FINGER SPOOL 100' (30 m)
203.8150	FINGER SPOOL 150' (45 m)

LIFT BAGS

60 AND 125 LB LIFT

You never know what you might find on a dive, so be prepared and always pack a Lift Bag. The Hollis 60 lb (27.2 kg) or 125 lb (56.7 kg) Lift Bag is just what you need to raise or mark items.

- 60 lb (57 kg) or 125 lb (56.7 kg) lift capacity
- Tear and mildew-resistant durable nylon fabric
- High-visibility bright orange for easy identification
- Over pressure relief valve with pull dump
- Stainless D-ring for line attachment
- Handle at the top of the lift bag for easy handling



SIGNAL MARKER BUOYS

The Hollis Signal Marker Buoy (SMB) is an essential safety device all divers should carry on every dive. The SMB is the smart-way for a diver to mark their location when making safety stops, completing mandatory decompression stops, and signaling the boat if they surface a distance away from the boat.

Signal Marker Buoy is a closed cell design made from durable 300-D polyester material with Radio Frequency (RF) Welded Seams. The Hollis SMB also has a sturdy nylon webbing strap loop with a stainless steel D-Ring for attachment to a reel or anchor line along with a wrist lanyard for hand-held use.

- 6 ft (1.8 m), 3 ft (1 m)
- Available in Yellow or Orange
- Oral inflation
- Stainless oral inflate valve
- Open cell / closed cell
- Quick Dump valve included



PART NO.	ITEM
208.2060.03	60LB LIFT BAG ORANGE
208.2125.03	125LB LIFT BAG ORANGE
208.2021.03	SIGNAL MARKER BUOY, CLOSED CELL, COMPACT, ORANGE
208.2022.03	SIGNAL MARKER BUOY, W/ SLING POUCH, ORANGE
208.2023.18	SIGNAL MARKER BUOY, W/ SLING POUCH, YELLOW

GENERAL ACCESSORIES

PART NO.	ITEM
210.8038	2" PLASTIC SLIDER
210.8010	3 BAR SLIDER SST 2"
210.8009	3 BAR SLIDE SERRATED 5 cm
210.8023	5 cm D-RING STAINLESS
210.8024	5 cm D-RING BENT STAINLESS
210.8025	5 cm D-RING STAINLESS, LOW PROFILE
210.8008.035	QUICKLINK 2.0
210.8002.030	3" SWIVEL BOLT SNAP SST
210.8002.035	3.5" SWIVEL BOLT SNAP SST
210.8002.045	4.5" SWIVEL BOLT SNAP SST
210.8003.035	3.5" DOUBLE ENDED SNAP SST

PART NO.	ITEM
210.8031	BOOK SCREWS
220.8120	TRAUMA SHEARS W/SHEATH
220.8122	UNDERWATER NOTEBOOK
220.8122-1	UNDERWATER NOTEBOOK NOTES - REFILL
220.8123	3 PCS WRIST SLATE
220.8131	TRIBOLUBE 71, O2 COMPATIBLE LUBE - 2OZ / 57 G SYRINGE
220.9110	INFLATOR MULTI-TOOL

EXPOSURE SIZING CHARTS

DX-300X UNISEX SIZING

SIZE	WEIGHT		HEIGHT		CHEST		WAIST		HIP		INSEAM	
	LBS	KG	IN	CM	IN	CM	IN	CM	IN	CM	IN	CM
XS	120 - 145	54 - 66	63 - 66	160 - 168	32 - 36	81 - 91	26 - 30	66 - 76	32 - 36	81 - 91	26 - 28	66 - 71
SM	135 - 155	61 - 70	66 - 68	168 - 173	34 - 38	86 - 96	28 - 32	71 - 81	34 - 38	86 - 96	27 - 29	68 - 73
MD	150 - 175	68 - 80	67 - 70	170 - 178	37 - 40	94 - 101	30 - 34	76 - 86	35 - 39	89 - 99	28 - 30	71 - 76
ML	170 - 195	77 - 89	69 - 72	175 - 183	38 - 42	96 - 106	32 - 36	81 - 91	37 - 41	94 - 104	29 - 31	73 - 79
LG	185 - 210	84 - 96	70 - 73	178 - 185	40 - 44	101 - 112	34 - 38	86 - 96	39 - 43	99 - 109	30 - 32	76 - 81
XL	210 - 240	96 - 109	71 - 74	180 - 188	42 - 46	106 - 117	36 - 40	91 - 101	41 - 45	104 - 114	31 - 33	79 - 84
XXL	235 - 265	107 - 121	73 - 76	185 - 193	44 - 48	112 - 122	38 - 42	96 - 106	43 - 47	109 - 119	32 - 34	81 - 86
XXXL	260 - 295	117 - 134	74 - 78	188 - 198	46 - 50	117 - 127	40 - 44	101 - 112	45 - 49	114 - 124	33 - 35	84 - 89

NEOTEK 8/7/6 SEMI DRY AND NEOTEK 4/3 WETSUIT UNISEX SIZING

SIZE	WEIGHT		HEIGHT		CHEST		WAIST		HIP	
	LBS	KG	IN	CM	IN	CM	IN	CM	IN	CM
SM	135 - 150	61 - 68	5'6" - 5'8"	167 - 172	36 - 38	91 - 96	29 - 31	73 - 78	35 - 36	88 - 91
MD	155 - 170	70 - 77	5'8" - 5'10"	172 - 177	38 - 40	96 - 101	31 - 33	78 - 83	37 - 39	93 - 99
ML	165 - 180	74 - 81	5'9" - 5'11"	175 - 180	40 - 41	101 - 104	32 - 34	81 - 86	38 - 40	96 - 101
LG/SH	170 - 185	74 - 81	5'7" - 5'9"	170 - 175	41 - 42	104 - 106	33 - 35	83 - 88	39 - 41	99 - 104
LG	175 - 190	79 - 86	5'10" - 6'1"	177 - 182	41 - 42	104 - 106	33 - 35	83 - 88	39 - 41	99 - 104
XL/SH	185 - 200	81 - 88	5'8" - 5'10"	172 - 177	42 - 44	106 - 111	35 - 37	88 - 93	41 - 43	104 - 109
XL	190 - 205	86 - 92	5'11" - 6'3"	180 - 190	42 - 44	106 - 111	35 - 37	88 - 93	41 - 43	104 - 109
XXL	205 - 220	92 - 99	6'0" - 6'3"	182 - 190	44 - 46	111 - 116	37 - 39	93 - 99	44 - 46	111 - 116
XXXL	230 - 260	104 - 117	6'1" - 6'4"	185 - 193	47 - 50	119 - 127	40 - 43	101 - 109	47 - 50	119 - 127

NOTES

This image shows a single sheet of white paper with horizontal ruling lines. The lines are evenly spaced and run across the width of the page. There are no margins, text, or other markings on the paper.



 **HOLLIS.**